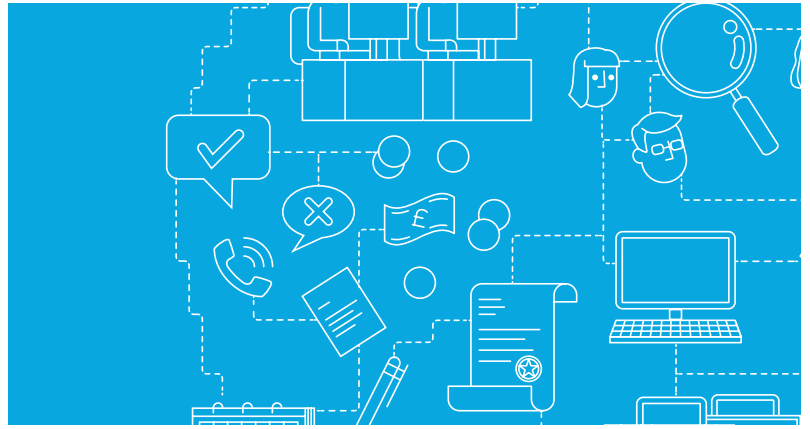


Outsourced HR services



Managing the people elements of your organisation is a critical task. It can be time consuming and if you get it wrong, can leave you exposed to major risk. Outsourcing your HR ensures that you meet the stringent requirements of UK employment law whilst giving you the freedom to focus on other priorities in your organisation.

Typical HR issues that organisations face:

- performance management and capability;
- misconduct;
- persistent short-term absence;
- long-term absence;
- probationary period concerns;
- 'heat of the moment' resignations; and
- holiday entitlement queries.



As a result of these issues you may face:

- Reputational damage
- Spiraling recruitment costs
- Disengaged employees and decreased productivity
- Unforeseen legal costs from disputes and dismissals
- Loss of management time dealing with issues and potential claims

Key features of our outsourced HR services:

Bespoke contract of employment template and employee handbook

Access to our online 'Employers' Toolkit' including essential template documents for your immediate use and valuable information on each key stage of the employee lifecycle

Access to specialist resource if you need to scale up, including complex project work or interim expertise

Timely summary of key legislative changes in employment law, relevant to your business

Revisions to your employment documentation to ensure adherence to legislation changes

Optional subscription to our monthly 'Employment matters' publication which offers topical HR, employment tax and employment legal insights



RSM's outsourced HR services provide a flexible and accessible solution, tailored to your needs. These services can be billed on a time or per-employee basis, giving you a confirmed, budgeted cost for your HR.

Whether you choose to fully outsource your HR management or simply supplement your existing in-house team, we adapt our support to meet your needs.

Please call our team for further details:

Steve Sweetlove

Partner

T +44 (0)7887 591358

steve.sweetlove@rsmuk.com

David Gibbens

Associate Director

T +44 (0) 7436 268375

david.gibbens@rsmuk.com

rsmuk.com

The UK group of companies and LLPs trading as RSM is a member of the RSM network. RSM is the trading name used by the members of the RSM network. Each member of the RSM network is an independent accounting and consulting firm each of which practises in its own right. The RSM network is not itself a separate legal entity of any description in any jurisdiction. The RSM network is administered by RSM International Limited, a company registered in England and Wales (company number 4040598) whose registered office is at 50 Cannon Street, London EC4N 6JJ. The brand and trademark RSM and other intellectual property rights used by members of the network are owned by RSM International Association, an association governed by article 60 et seq of the Civil Code of Switzerland whose seat is in Zug.

RSM UK Corporate Finance LLP, RSM UK Restructuring Advisory LLP, RSM UK Risk Assurance Services LLP, RSM UK Tax and Advisory Services LLP, RSM UK Audit LLP, RSM UK Consulting LLP, RSM Northern Ireland (UK) Limited and RSM UK Tax and Accounting Limited are not authorised under the Financial Services and Markets Act 2000 but we are able in certain circumstances to offer a limited range of investment services because we are licensed by the Institute of Chartered Accountants in England and Wales. We can provide these investment services if they are an incidental part of the professional services we have been engaged to provide. RSM UK Legal LLP is authorised and regulated by the Solicitors Regulation Authority, reference number 626317, to undertake reserved and non-reserved legal activities. It is not authorised under the Financial Services and Markets Act 2000 but is able in certain circumstances to offer a limited range of investment services because it is authorised and regulated by the Solicitors Regulation Authority and may provide investment services if they are an incidental part of the professional services that it has been engaged to provide. Whilst every effort has been made to ensure accuracy, information contained in this communication may not be comprehensive and recipients should not act upon it without seeking professional advice.